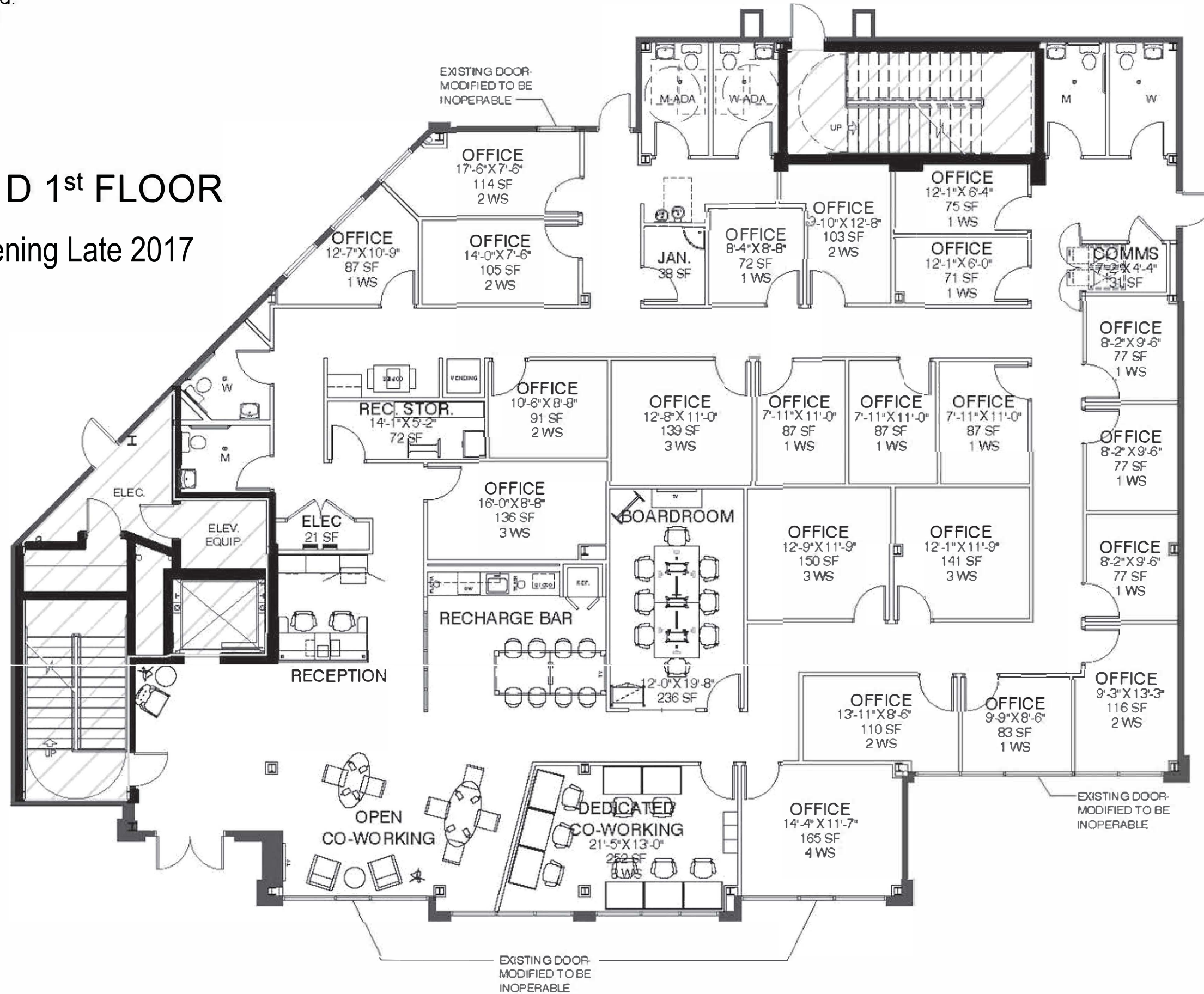


BUILDING D 1st FLOOR

Regus Opening Late 2017



BUILDING D 2nd FLOOR

Regus Opening Late 2017



For Leasing information contact John Frank at (504) 348-1747 or jfrank@5starfpc.com or Chad Guidry at chad@5starfpc.com

Floorplans by McKenzie Arch & Associates.